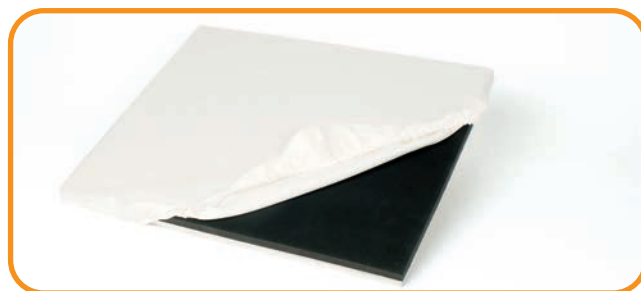


# ACCESSORIES AND SPARE PARTS

## NOMEX COVERS

Heat-resistant Nomex covers protect the pressure plate against discoloration. Covers are machine washable and slide easily onto plates thanks to an integrated elastic band.



## TEFLON COVERS

Teflon covers protect heating plates against contamination and transfer material adhesive residue that can burn in. Covers are very easy to clean and can be quickly changed.



## SILICONE RUBBER MATS

Heat and shape-retaining silicone rubber mats for printing plates facilitate even application of pressure during the transfer process. Unevenness resulting from seams, buttons, or zippers is offset, so that the transfer pad provides a smooth surface.



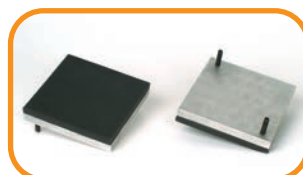
## PRINTING PLATES

All convertible Lotus presses printing plate accessories can be easily and quickly interchanged. This adaptation to the size and shape of your transfer motif means a faster working process and maximum protection for your textile. Different printing plate configurations are available for pneumatic and manual heat presses.

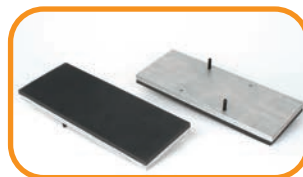
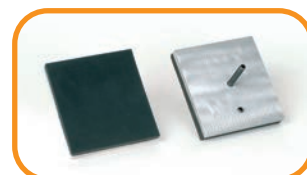
We are pleased to offer customized dimensions upon request.

The following printing plate sizes and shapes are available:

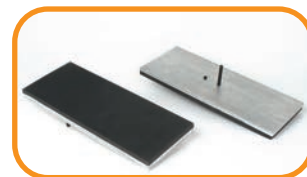
- Breast pocket in 12 x 13 cm (manual) or 15 x 15 cm (pneumatic)
- Sleeves or trouser leg in 15 x 38 cm
- Girlie shirt in 25 x 38 cm
- Trapezoidal shape for umbrellas
- All printing plates are vertically displaceable



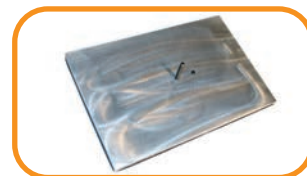
PneumaticManuel



PneumaticManuel



PneumaticManuel



PneumaticManuel



## CAP SETS

Most Lotus convertible presses can be equipped with an additional cap set. Different designs are available for pneumatic and manual presses. Standard size is approx. 13 x 9 cm.

Customized dimensions are available upon request.



## HEATING PLATES

Even-distribution heating plates are available in customized dimensions. Thanks to an innovative quick-lock solution, heating plates can be interchanged in two minutes – without using any tools.



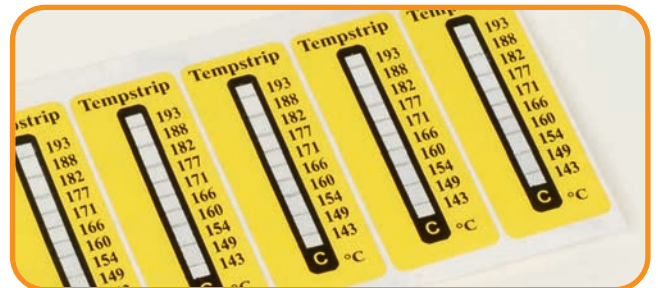
## HEATING ELEMENTS

Exchanging a heating element is easy if necessary. Lotus presses feature very precise, effective, and longlasting Mikanit heating technology in all of our presses with heating plates larger than 25 x 12 cm.



## TEMPERATURE INDICATOR

Self-adhesive temperature indicators are recommended for control if the displayed temperature and effective temperature of heating presses are identical. 10 pads from 143 to 193°C show if the desired temperature has been reached or not. You should check your heating plate every two years or if a problem with the adhesion of transfer material occurs.



## MORE ACCESSORIES AND SPARE PARTS

We are pleased to fulfill customer requests for spare parts and accessories. Even if you need parts for machines that are no longer part of our current product line. If a replacement part is not available, we can produce it for you.

Thanks to this exceptional service, all important parts for your Lotus press will be available – for many years to come!

